

MAQÉ



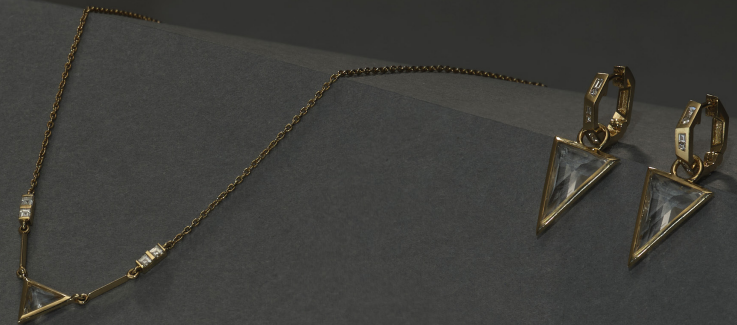
The Divinity Collection

Our newest MAQÉ collection is all about celebrating the divine feminine energy. An homage to the feminine power, love and instincts which are a fundamental part of life.

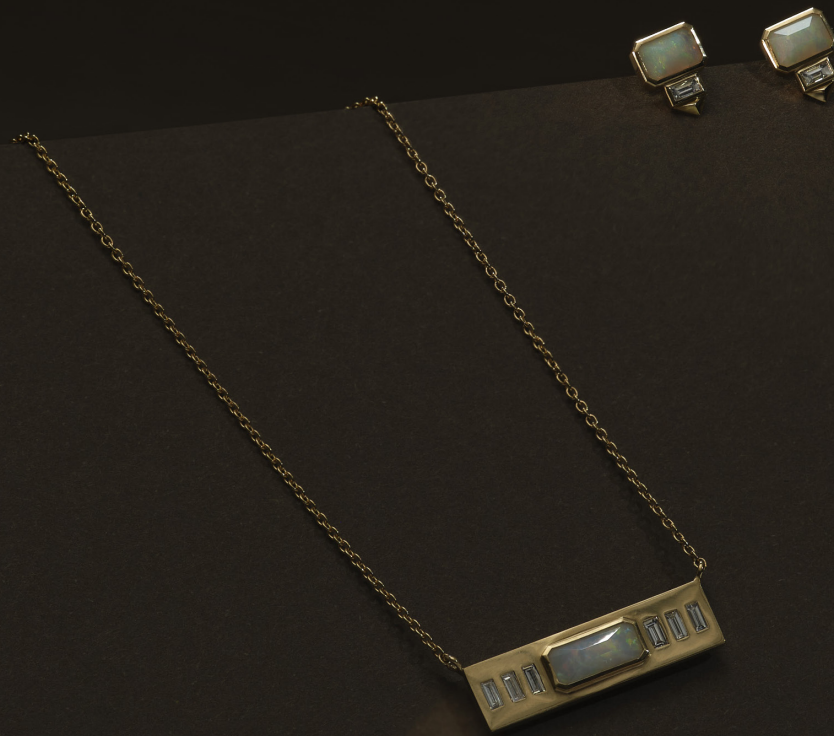
The downward pointing triangle has been the symbol in various cultures and religions for femininity as has the number 3. These symbols can be found throughout the collection, a small daily reminder!

Our handcrafted fine jewelry line is made of 18k gold and adorned with diamonds in baguette and princess cut, Australian sapphires, aquaprase, white opal and clear quartz. The diamonds have the GVS quality which are colorless and with no inclusions visible to the naked eye.

Subtle, elegant statement pieces made to be worn every day.









MAQÉ

www.maqethecollection.com